

Mitsubishi A173UH/A2A/A2U/A2AS/A2USH/A3U

Supported Series: Mitsubishi A173UH,A2A,A2U,A2AS,A2USH,A3U

Website: <http://www.mitsubishi-automation.com/>

HMI Setting:

Parameters	Recommended	Options	Notes
PLC type	Mitsubishi A173UH/A2A/A2U/A2AS/A2USH/A3U		
PLC I/F	RS232		
Baud rate	9600		
Data bits	8		
Parity	Odd		
Stop bits	1		
PLC sta. no.	0		
File register	0	0 ~ 8	*Note
Device type	A2A / A2U	A2A/A2U/A2AS/A2USH/ A173UH/A3U	

*Note: Parameter -> Memory capacity -> File register

The screenshot shows the 'A parameter' dialog box with the following settings:

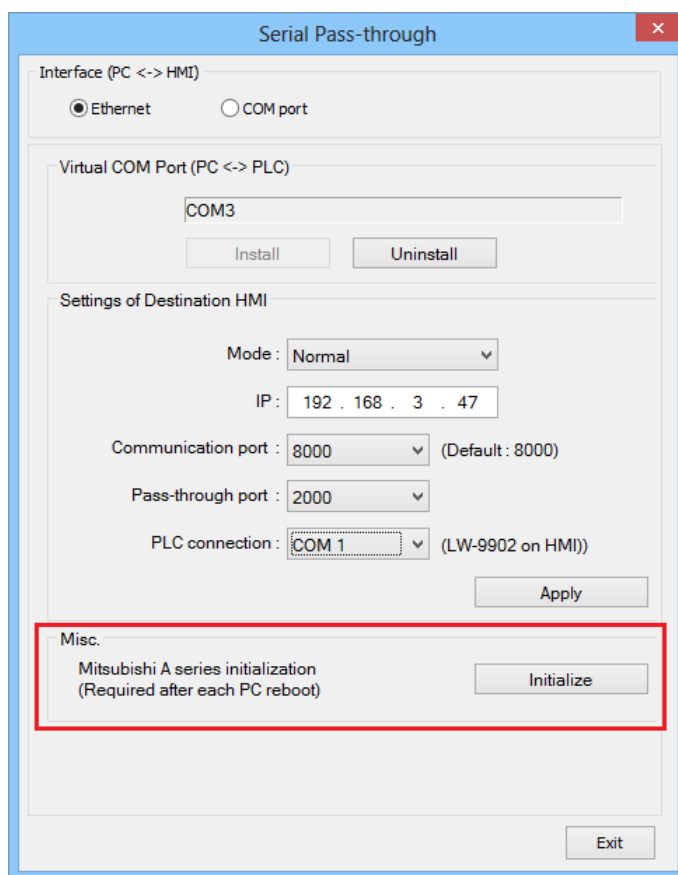
- Program capacity:** Sequence (1--30) Microcomputer, Main: 6 K steps, 0 Kbytes
- Network:** 0 Kbytes
- Sub-sequence (0--30) Sub-microcomputer (None):** Sub1: 0 K steps, Sub2: K steps, Sub3: K steps
- File register (0--8):** 1 K points, 2048 Bytes (highlighted with a red box and an orange arrow)
- Comment (0, 2--64):** 0 Kbytes, 0 Points
- Expanded comment (0, 2--63):** 0 Kbytes, 0 Points
- Capacity for debugging:** Sampling trace, Status latch (data memory), Status latch (file register)
- Memory capacity information:** Main capacity: 12 Kbytes, Sub capacity: 0 Kbytes, Total capacity: 18 Kbytes

Device Address:

Bit/Word	Device type	Format	Range	Memo
B	X	HHHH	0 ~ 270f	Input Relay
B	Y	HHHH	0 ~ 270f	Output Relay
B	M	DDDD	0 ~ 9999	Auxiliary Relay
B	B	HHHH	0 ~ ffff	
B	F	DDDDD	0 ~ 65535	
W	TV	DDD	0 ~ 2047	Timer Memory
W	CV	DDD	0 ~ 1023	Counter Memory
W	D	DDDD	0 ~ 9999	Data Register
W	W	HHHH	0 ~ ffff	
W	R	DDDDD	0 ~ 65535	

Pass-through:

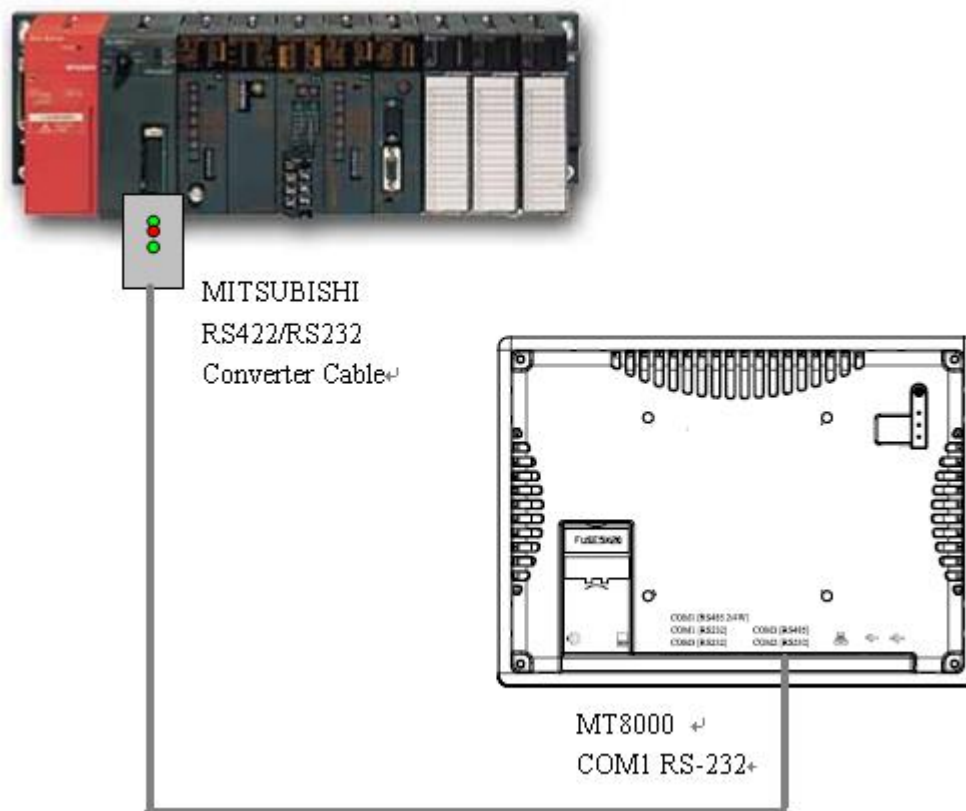
When the PC reboots or virtual com port is reinstalled, it needs to be re-initialized for pass-through.



Wiring Diagram:

Use the RS422 to RS232 PLC programming cable (shown as follows)

MITSUBISHI AnS CPU



Note: Due to hardware limitations, this PLC is not supported by HMI models without RTS/CTS.

Diagram 1

RS-232

The serial port pin assignments may vary between HMI models, please click the following link for more information.

HMI	PLC Programming Converter		PLC
Link			RS422 25P D-Sub Male
Rx	TX	TX+	2 RX+
Tx	RX	RX+	3 TX+
GND	GND	DTR+	4 DSR+
RTS	CTS	GND	7 GND
CTS	RTS	TX-	15 RX-
		RX-	16 TX-
		DTR-	17 DSR-

Diagram 2

cMT-G01, cMT-G02, cMT-SVR-100/200, cMT-FHDX-820, cMT-SVRX-820 connection diagram

HMI		PLC
Link RS485-4W		A Series PLC CPU 25 pin
8 TX+	←→	2 RX+
9 TX-	←→	15 RX-
6 RX+	←→	3 TX+
7 RX-	←→	16 TX-
1 Data+	←→	4 CTS+
4 Data-		17 CTS-
5 GND		7GND
		20 21 Short